



# THWY4-100 SINGLE MAST LIFT

SPECIFICATION

01

**Model**

**THWY4-100**

Platform height

4m

Working height

6m

Load capacity

100kg

Platform size

0.6x0.6m

Overall size

1.28x0.8x1.75m

Power

AC / DC

Weight

250kg

Voltage

AC220/50HZ, or customize

Wheels

Polyester solid tyre / Rubber pneumatic tyre

Lifting speed

4-6m/min

# TUHE Single Mast Lift

Jinan Tuhe Heavy Industry Machinery Co., Ltd.



## Easy To Operate

Bottom button control and remote control are standard, also can make platform button control.



## Walking Assist Device

With this motor device you can move the lift easily.



## Color Optional

Blue, red, green, black...We can customize the color and logo for you.



## Explosion-proof Cylinder

Explosion-proof valves on the cylinder can keep the lift and people safe, also provide long-lasting protection.

**Detail Name**

**Description And Picture**

**Emergency Lowering Valve**

When power cut or anything bad happens, you can lower the platform by loosen this valve.



**Level Vial**

Before lifting up, the level must be sure it is horizontal.



**Bottom Control**

You can control the lift go up and go down by this button.



**Remote Control**

Standard control, you can control the lift on the platform.



**Detail Name**

**Description And Picture**

**Outriggers**

Before you use the lift, you must open the outriggers and make it level.



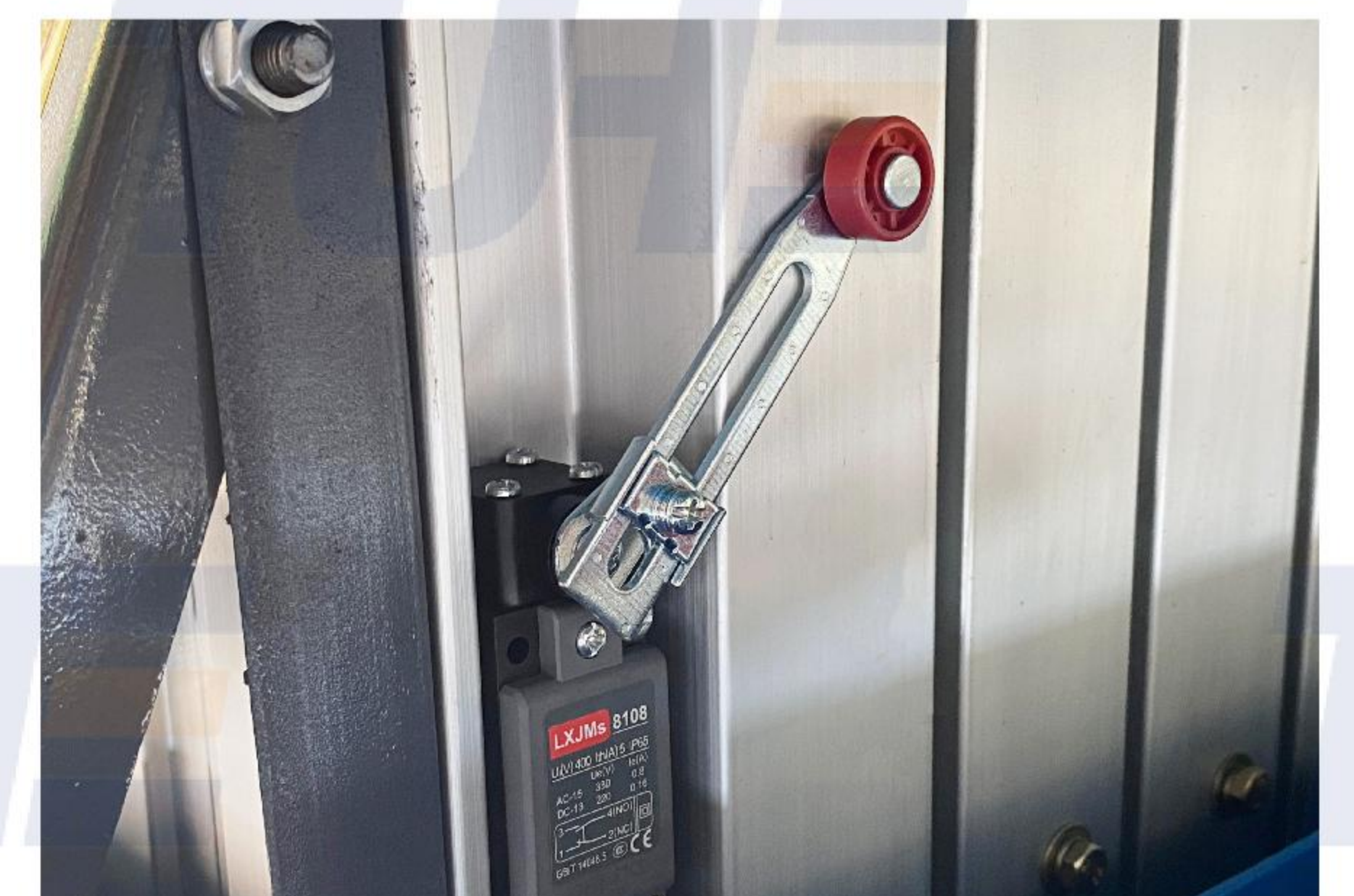
**Solid Universal Wheel**

It makes no harm to the floor, you can move the lift indoors easily.



**Limit Switch**

The lift will stop at position when it touches this switch.



**High Strength Aluminium Alloy**

Strong and durable material makes the lift stable to be used.

